

GRAIN CLEANING EQUIPMENTS

ANAMILLING



MAGNETIC SEPARATOR MODEL: ACMS and ACMA

Manyetik ayırıcı
Separateur magnétique
Seperador magnético

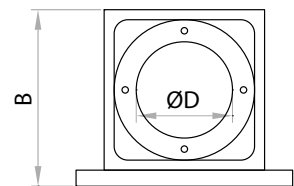
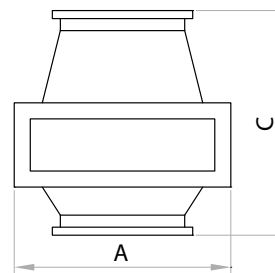
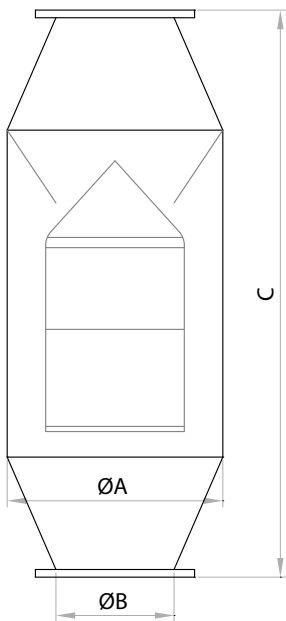
MAGNETIC SEPARATOR - MODEL: ACMS and ACMA



Magnetic separators are used to eliminate ferrous materials in the grain during the flowing of the material to protect further equipment damages from metal particles.

Séparateurs magnétiques sont utilisés pour éliminer les matières ferreuses dans les céréales au cours de l'écoulement de la matière à protéger des dommages-intérêts autres équipements de particules métal.

Los Separadores Magnéticos se utilizan para eliminar los materiales ferrosos de los cereales durante el fluir de las mercancías para proteger a otros equipos de daños y perjuicios por causa de las partículas metálicas.



MODEL		ACMS-7	ACMS-10	ACMS-15
Capacity	(t/h)	7	10	15
Dimension mm	ØA	250	250	250
	ØB	100	150	200
	C	1000	1000	1000
Weight	(kg)	16	18	20

MODEL			ACMS-10	ACMS-15
Capacity	(t/h)		7	10
Dimension mm	A	Length	270	270
	B	Width	220	220
	C	Height	280	280
	ØD	Diameter	120	150
Weight	(kg)		10	12

*The capacities for the machines and equipments shown in this catalogue are for wheat having 780 kg/m³ specific gravity and may vary depending on the specific gravity, humidity and foreign material contents of grain"