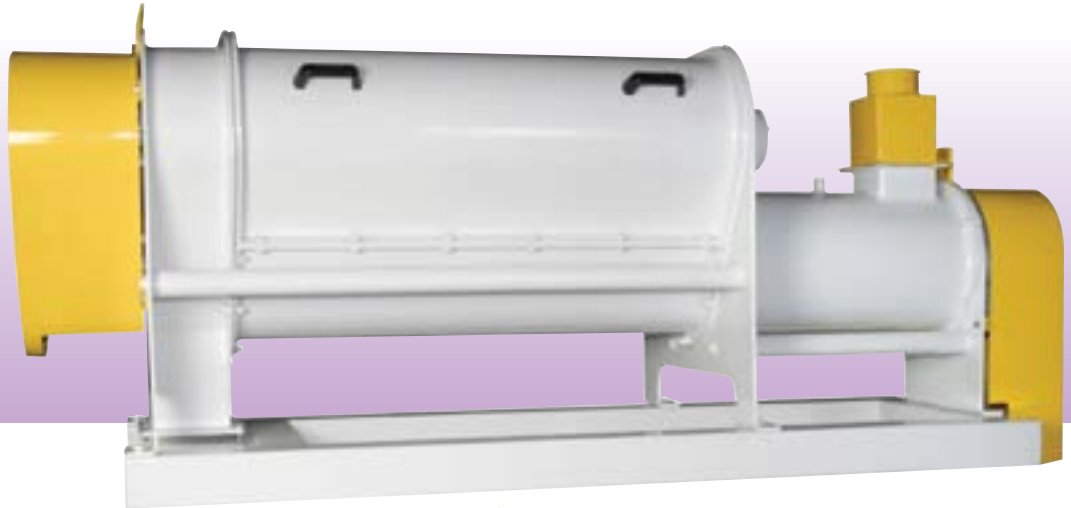


GRAIN CLEANING EQUIPMENTS

ANAMILLING



INTENSIVE DAMPENER MODEL: ACTN

Cebri tav makinesi
Intensive de mouillage
Mojador

INTENSIVE DAMPENER - MODEL: ACTN



Intensive dampeners are used to moisturize the grains to a sufficient moisture content in the mill plants to ease the processing performances with economic usage of energy, increasing usage life of the equipments.

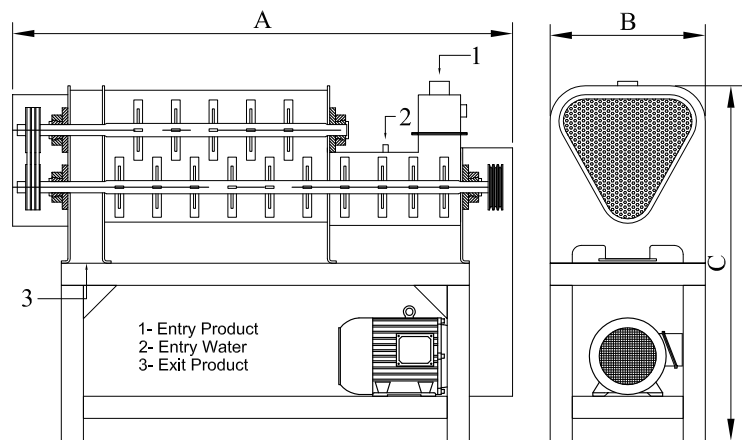
Intensive de mouillage sont utilisés pour hydrater les grains à une teneur en humidité suffisante dans les ateliers de l'usine afin de faciliter les performances de traitement avec un usage économique de l'énergie, augmentation de la longévité des équipements.

Los mojadores intensivos se utilizan para hidratar los granos a un contenido de humedad requerido para el molino y así facilitar el rendimiento en el procesamiento con el uso económico de energía, el aumento de la vida útil de los equipos

DEBIMETER MODEL: ADGM



Digital screen flow meters transmit the data received from the flowing grain by the capacitive sensors placed in the entrance of the product entry of the dampeners. They count the pulse data received from the digital water meter on the flow meter, shows how much water flows per hour and stores the value in the memory. They also produce an output of 4 – 20 mA, and by evaluation of this data in its PLC; flow can be observed from the PC, too.



MODEL		ACTN 32/50-3R	ACTN 32/100-3R	ACTN 32/100x15-3R
Capacity	(t/h)	3-5	5-8	8-10
Motor	(kw)	7,5	11	15
Dimension (mm)	A	Lenght	1760	2260
	B	Weight	710	710
	C	Height	1620	1620
Weight	(kg)	350	600	700

"The capacities for the machines and equipments shown in this catalogue are for wheat having 780 kg/m³ specific gravity and may vary depending on the specific gravity, humidity and foreign material contents of grain"